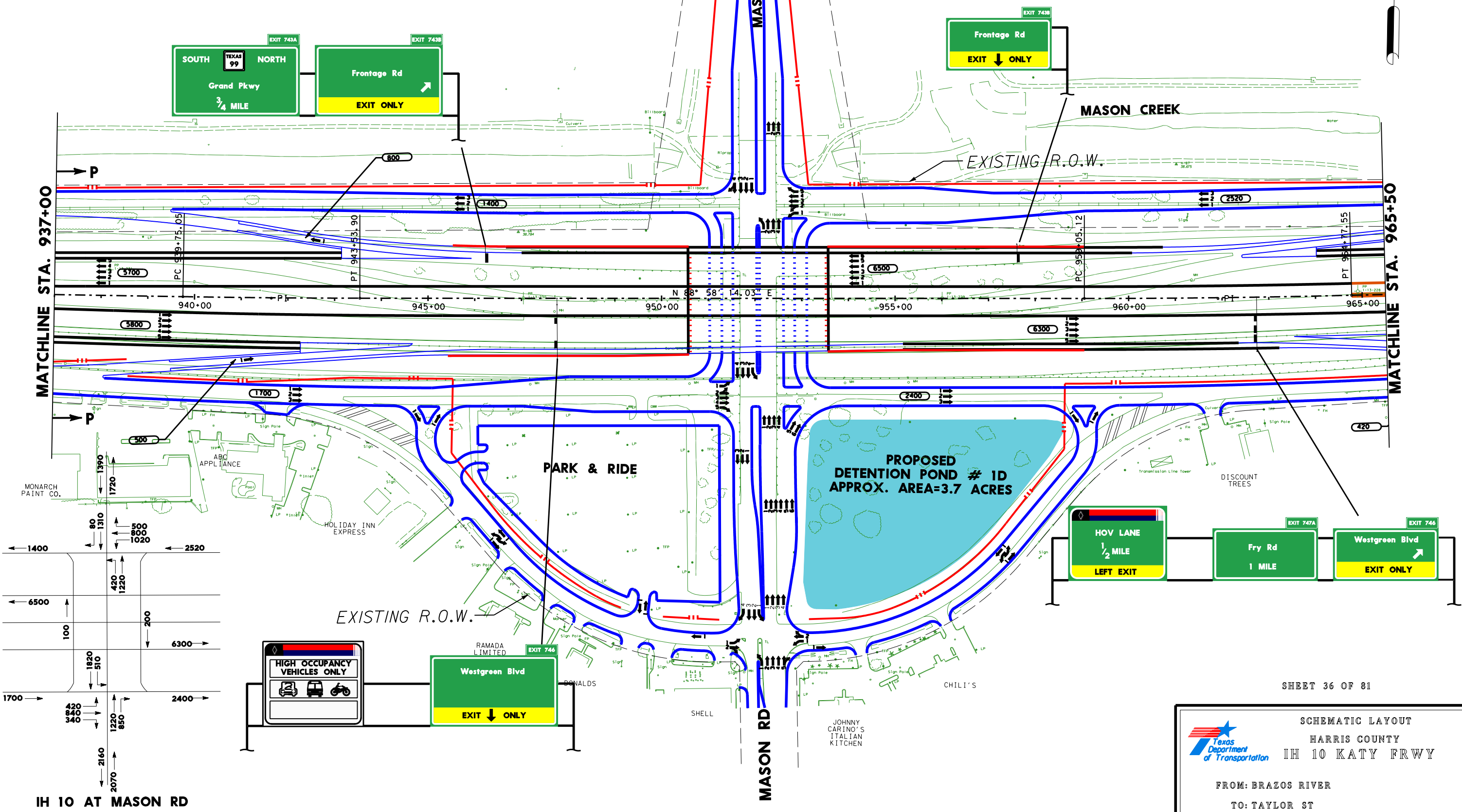


PI STATION = 941+64.48
 DELTA = 0° 56' 49.73" (LT)
 DEGREE OF CURVE = 0° 15' 00.00"
 TANGENT = 189.43
 LENGTH = 378.86
 RADIUS = 22,918.31
 PC STATION = 939+75.05
 PT STATION = 943+53.90

PI STATION = 961+91.35
 DELTA = 1° 25' 51.83" (LT)
 DEGREE OF CURVE = 0° 15' 00.00"
 TANGENT = 286.23
 LENGTH = 572.43
 RADIUS = 22,918.31
 PC STATION = 959+05.12
 PT STATION = 964+77.55



MATCHLINE STA. 937+00

MATCHLINE STA. 965+50

IH 10 AT MASON RD

SHEET 36 OF 81

SCHEMATIC LAYOUT
 HARRIS COUNTY
 IH 10 KATY FRWY
 FROM: BRAZOS RIVER
 TO: TAYLOR ST
 HOUSTON DISTRICT

DATE: AUG. 2000
 APPROVED: JUNE 19, 2003