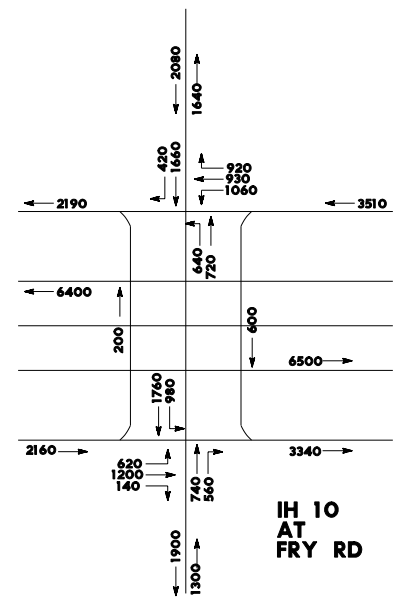
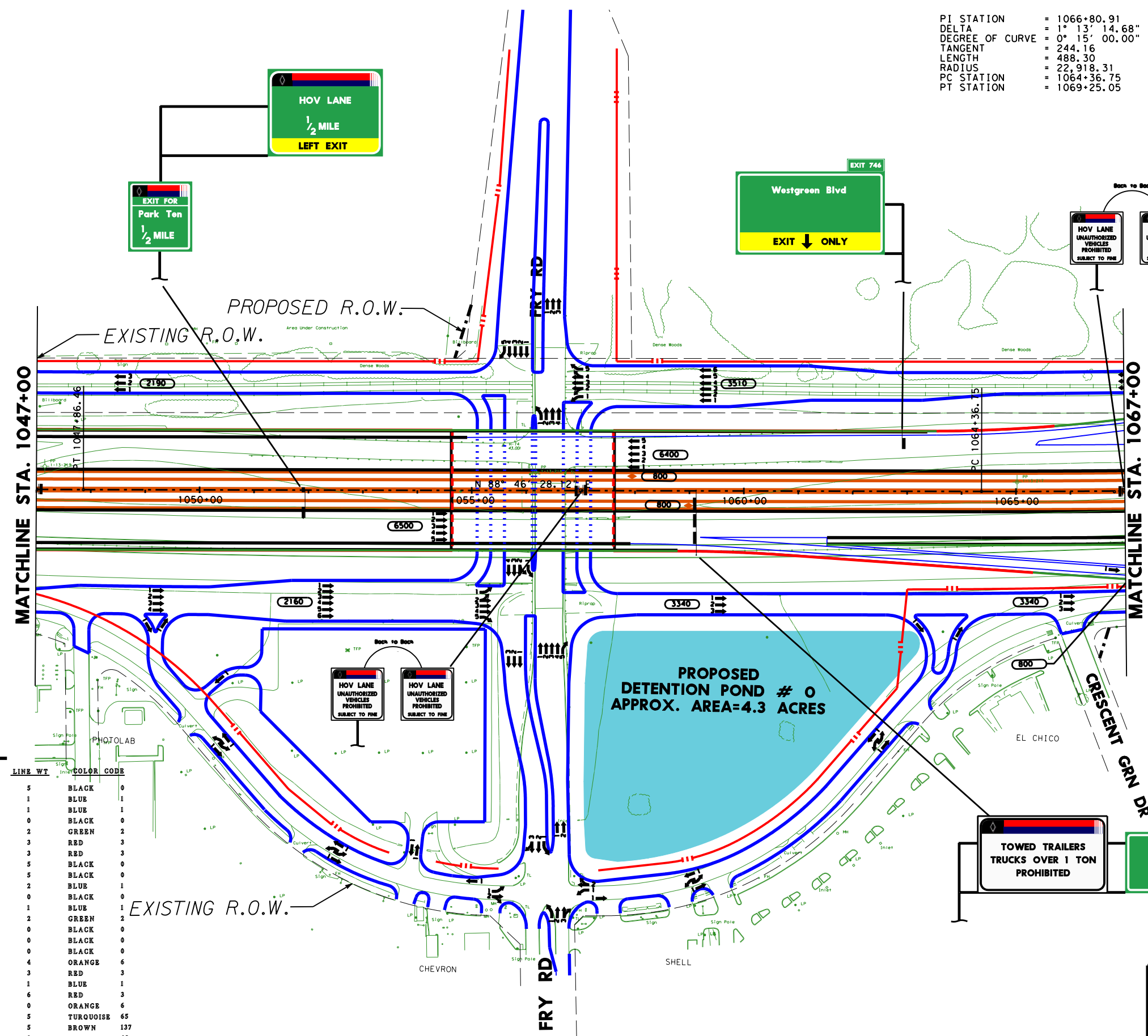
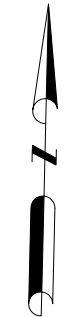


PI STATION = 1066+80.91
 DELTA = 1° 13' 14.68" (LT)
 DEGREE OF CURVE = 0° 15' 00.00"
 TANGENT = 244.16
 LENGTH = 488.30
 RADIUS = 22,918.31
 PC STATION = 1064+36.75
 PT STATION = 1069+25.05



LEGEND

SYMBOL	LINE WT.	COLOR	CODE
MAIN LANES	5	BLACK	0
FRONTAGE ROADS AND RAMPS	1	BLUE	1
TURNAROUNDS	1	BLUE	1
EXISTING RDWY TO BE REMOVED	0	BLACK	0
EXISTING RDWY TO REMAIN	2	GREEN	2
EMBANKMENT	3	RED	3
CONTROL OF ACCESS	3	RED	3
PROP ROW	5	BLACK	0
PROPOSED R.O.W. FOR HIGH MAST LIGHTING	2	BLUE	1
EXISTING ROW	0	BLACK	0
ACCESS ROAD	1	BLUE	1
PLANIMETRIC	2	GREEN	2
TRAFFIC COUNT YEAR (2020) DHV	0	BLACK	0
EXISTING LANE DIRECTIONAL INDICATOR	0	BLACK	0
PROPOSED LANE DIRECTIONAL INDICATOR	0	BLACK	0
DIRECT CONNECTOR	4	ORANGE	6
DEPRESSED	3	RED	3
FUTURE	1	BLUE	1
RETAINING WALL	6	RED	3
STRIPING	0	ORANGE	6
HIGH OCCUPANCY VEHICLE (HOV)	5	TURQUOISE	65
DIAMOND LANE	5	BROWN	137
MANAGED LANES	9	LT PURPLE	42
TEMPORARY CONNECTIONS	10	PURPLE	37
RDWY. UNDER CONSTRUCTION	5	LT GREEN	197
RECOMMENDED NOISE ABATEMENT WALL	10	PURPLE	203



SHEET 40 OF 81

SCHEMATIC LAYOUT
 HARRIS COUNTY
 IH 10 KATY FRWY
 FROM: BRAZOS RIVER
 TO: TAYLOR ST
 HOUSTON DISTRICT
 DATE: AUG. 2000
 APPROVED: JUNE 19, 2003