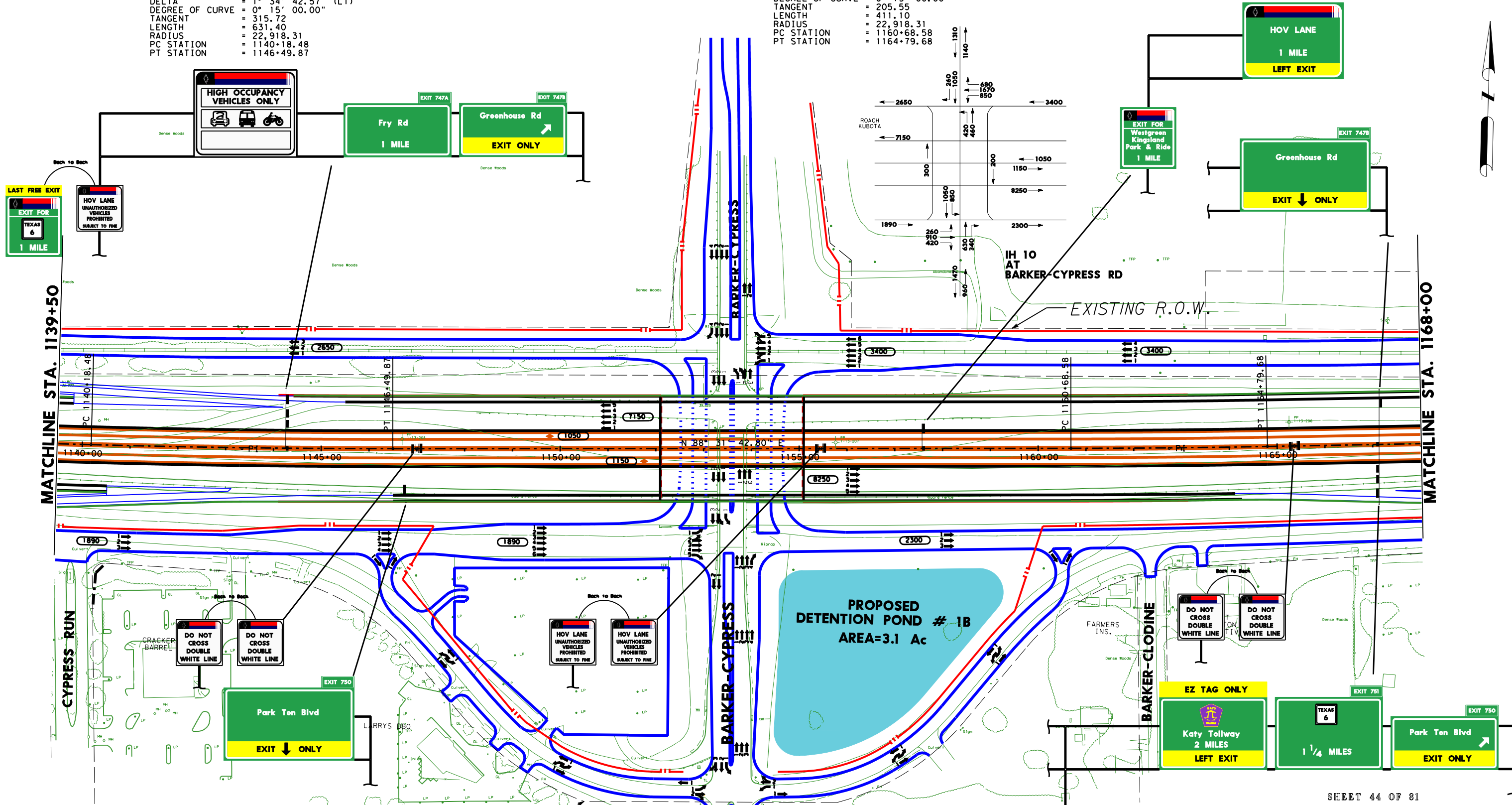


PI STATION = 1143+34.19  
 DELTA = 1° 34' 42.57" (LT)  
 DEGREE OF CURVE = 0° 15' 00.00"  
 TANGENT = 315.72  
 LENGTH = 631.40  
 RADIUS = 22,918.31  
 PC STATION = 1140+18.48  
 PT STATION = 1146+49.87

PI STATION = 1162+74.13  
 DELTA = 1° 01' 39.87" (LT)  
 DEGREE OF CURVE = 0° 15' 00.00"  
 TANGENT = 205.55  
 LENGTH = 411.10  
 RADIUS = 22,918.31  
 PC STATION = 1160+68.58  
 PT STATION = 1164+79.68



MATCHLINE STA. 1139+50

MATCHLINE STA. 1168+00

SHEET 44 OF 81

SCHEMATIC LAYOUT  
 HARRIS COUNTY  
 IH 10 KATY FRWY  
 FROM: BRAZOS RIVER  
 TO: TAYLOR ST  
 HOUSTON DISTRICT

Texas Department of Transportation  
 DATE: AUG. 2000  
 APPROVED: JUNE 19, 2003