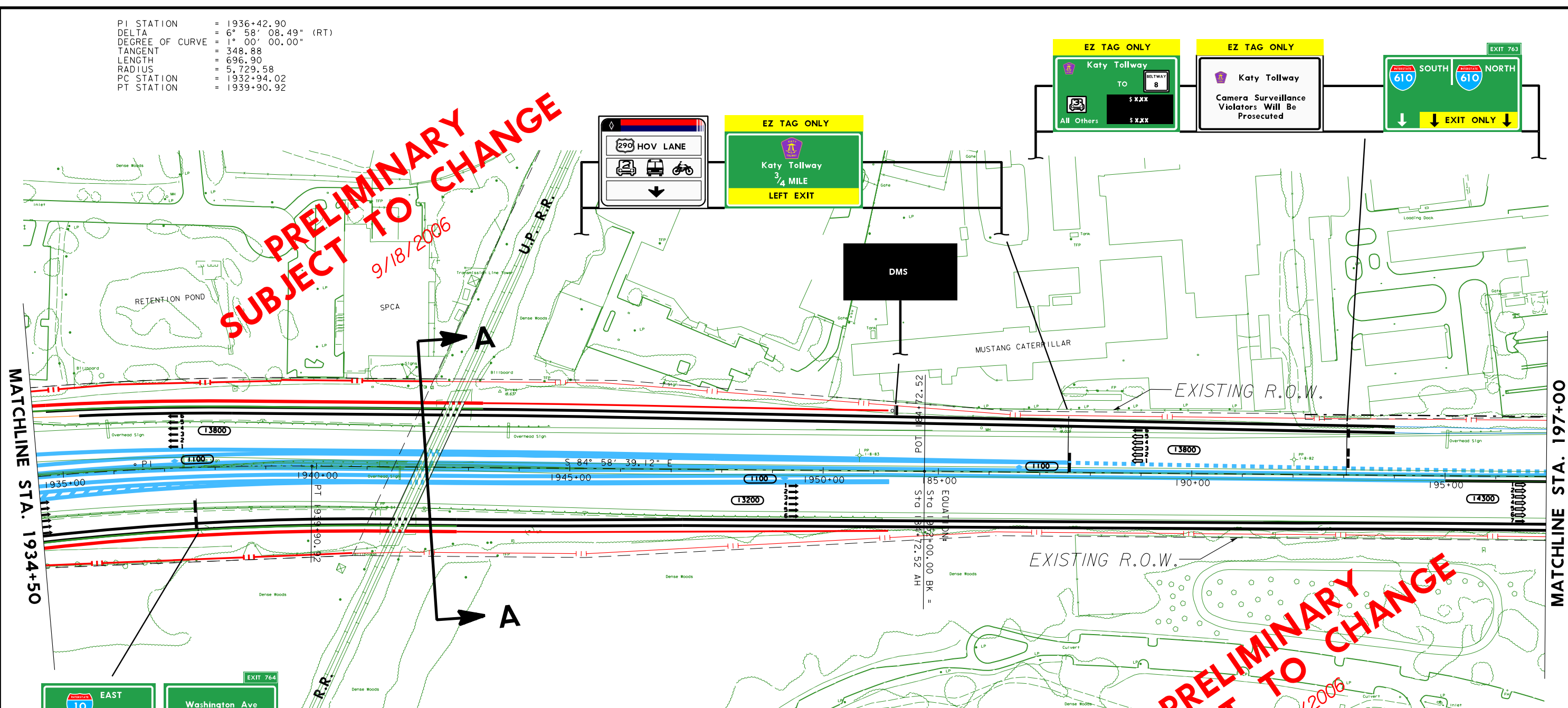
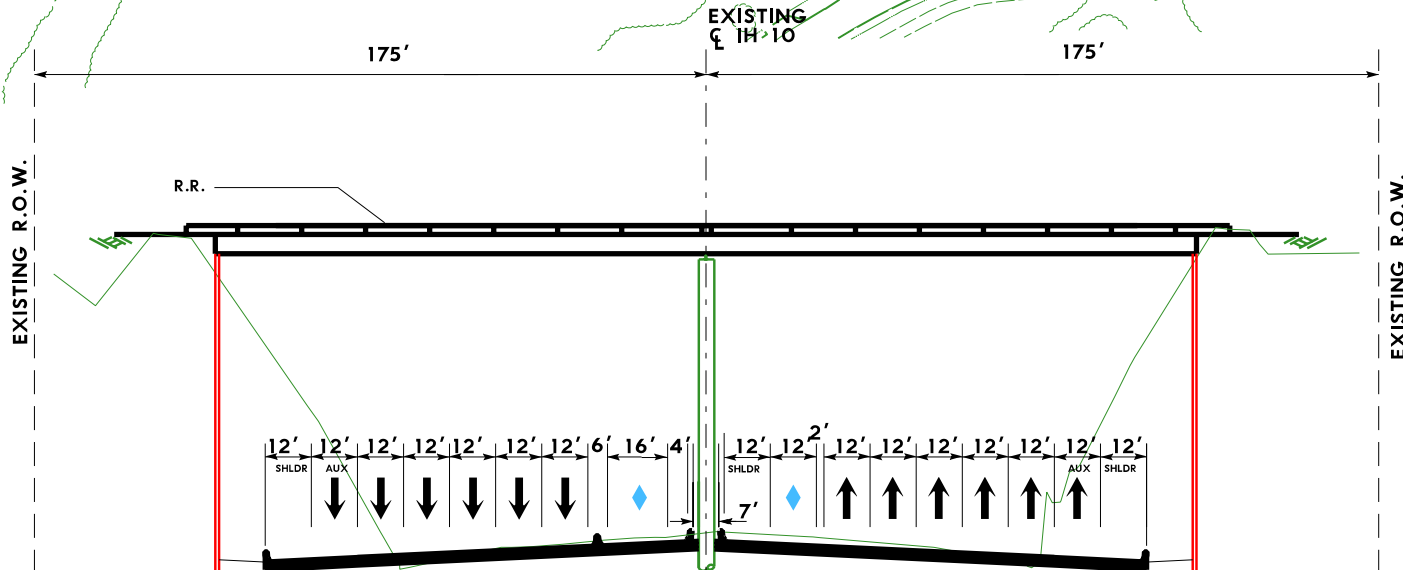


PI STATION = 1936+42.90
 DELTA = 6° 58' 08.49" (RT)
 DEGREE OF CURVE = 1° 00' 00.00"
 TANGENT = 348.88
 LENGTH = 696.90
 RADIUS = 5,729.58
 PC STATION = 1932+94.02
 PT STATION = 1939+90.92

**PRELIMINARY
SUBJECT TO CHANGE**
 9/18/2006



**PRELIMINARY
SUBJECT TO CHANGE**
 9/18/2006



REVISIONS

REVISION NO.	DATE	DESCRIPTION	APPROVAL DATE
1	AUG. 2001	DELETED WESTBOUND FRONTAGE ROAD BETWEEN STUDEMONT AND TAYLOR ST.	2/20/02
2	FEB. 2003	REVISED MANAGED/ HOV LANE SIGNS	6/19/03
3	SEPT. 2006	REMOVED EASTBOUND AND WESTBOUND FRONTAGE ROAD BRIDGES BETWEEN WASHINGTON AVE AND TC JESTER BLVD. REVISED RAMP BETWEEN PATTERSON AND YALE.	

SHEET 74 OF 81

SCHEMATIC LAYOUT
 HARRIS COUNTY
 IH 10 KATY FRWY
 FROM: BRAZOS RIVER
 TO: TAYLOR ST
 HOUSTON DISTRICT

DATE: AUG. 2001
 APPROVED: JUNE 19, 2003

H:\ProJDev\091200053\Submissions\9-2006\Schematic\1906*sch\lay20.dgn
 10:31:10 AM 9/18/2006